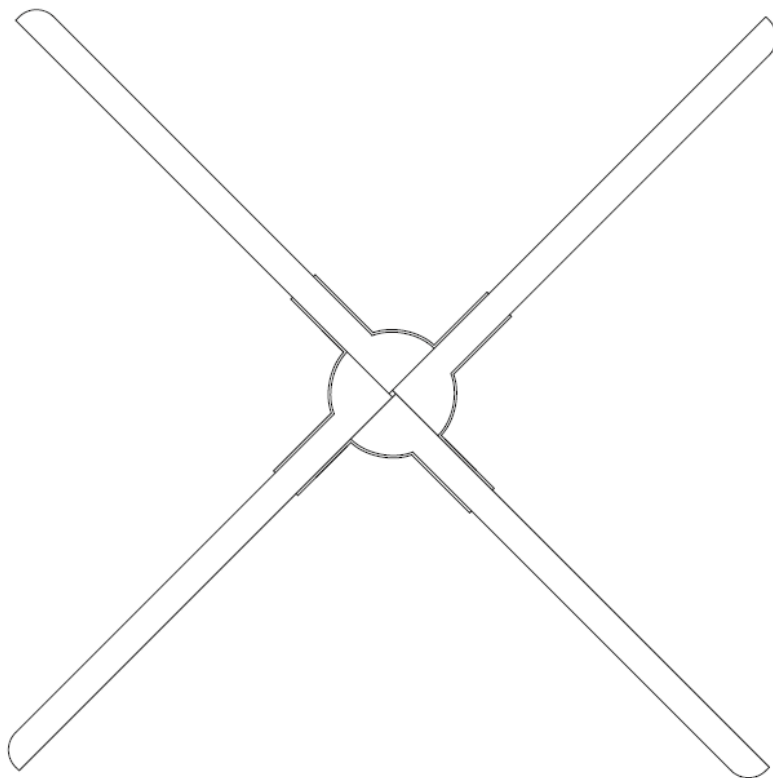


3D HOLOGRAPHIC (G50)



User Manual

Warning: Please read this user manual carefully before using the product

Notes

- 1、 The device should be kept distance from barrier .Install first before turn on the device. In order to prevent the blade from scratching others and damaging the device blades.
- 2、 Keep a safe distance from the device when using it, and ensure a safe environment when installing it to avoid injury.
- 3、 When the device is working, do not disassemble the device, otherwise it may cause abnormal operation on the device.
- 4、 Keep away from high temperature and high humidity environment. Do not use it outdoor if it is raining.
- 5、 Pay attention to maintenance and clean the device regularly.

Parts list

3D Hologram Fan*1, Fan blade*4(Ax2,Bx2), Adaptor*1, Remote Controller*1, Wall-mounting Part*1, Setscrew*2, Warranty Card*1, Certification Card*1, specification*1

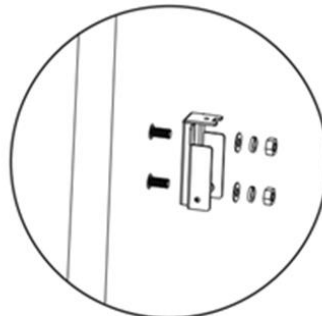
How to Install

1. First fix the fixed part to the wall with expansion screws or ordinary screws to facilitate the subsequent installation of the device.

As below picture:



fixed par



Installation

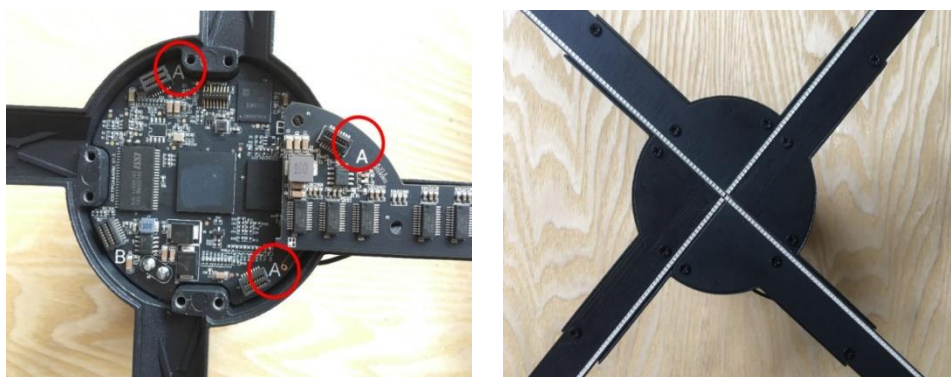
2. Take out the fan body and fan blades, Put blade A in position A, Put blade B in position B. Tighten all screws , fan blade is completed.



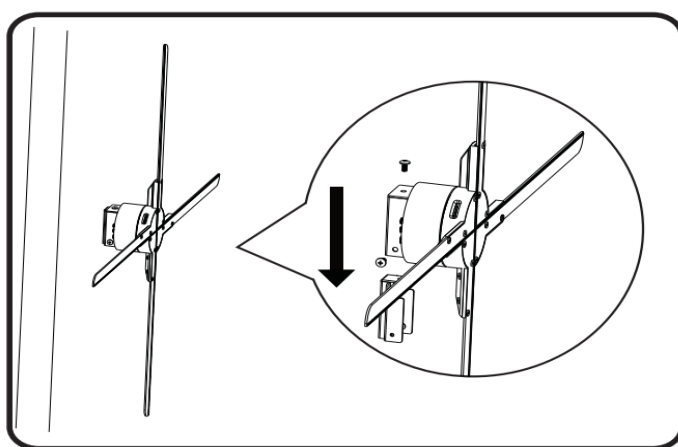
Fan body



fan blade



3、 Put the fan into fixed part, lock the screws to finish install, As below picture:



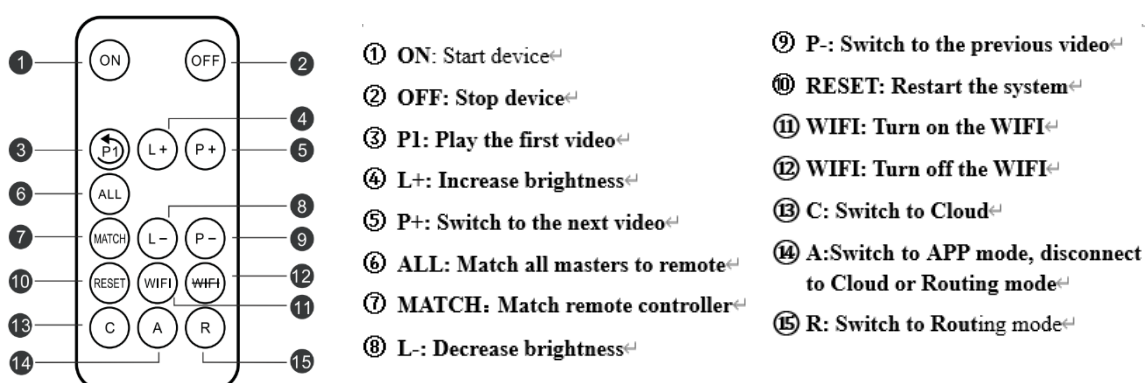
Instructions for use

1. Pow for the device and the device will be in standby state. It can be seen that the LED on the fan blade is on and off in the way of a breathing light. The indicator light 1 behind the device is always red.

2. Remote match

When the device is in standby state (no rotation), click the “MATCH” button behind the device, the indicator 1 will turn from red to green flashing. At this time, use the remote control to aim at the device, click the MATCH key of the remote control, indicator 1 will turn back to red after the green flashing becomes faster, and the pairing is successful.

The functions of the remote control buttons are as follows:



3、Mobile APP Control

(1) Download APP software

Android Download URL:

<http://down.holocloud.online>

IPhone (App Store) search for :3D Magic

It can be downloaded APP by scanning the QR code

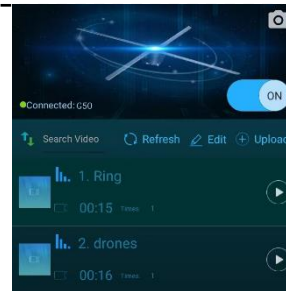


(2) Connect with device

Connect to the WIFI of the device, and open the APP.

The WIFI format of the device will be as follows:

CS_G50_XXXXXX. The specific number is shown in the body of the device, the password is CS123456



Note: If the APP cannot be connected, check whether the APP is the latest version. At the same time, APP needs the necessary permissions such as opening location and storage

Control with cloud

The cloud can remotely control the device , the operation steps are as follows:

(1) Cloud account registration

Click the corresponding website and follow up the prompts on the page to complete the account registration. You can choose China server or European server.

China server URL: <https://www.holocloud.online/>

European server URL: <https://england.holocloud.online/>

(2) Configure the cloud connection information via the mobile phone APP

Connect the mobile APP to the device, and enter: "Setup", click "Remote Control" to open the cloud long connection and select the cloud server you want to use. Enter the network used to connect to the cloud and the bound cloud account. Click "DEVICE CONNECT TO CLOUD", and the device will automatically connect to the cloud, Device indicator light 2 will turn green, APP will be disconnected from the device and WiFi of the device will not be visible

(If the machine has connected to the cloud succeed, next time you can quickly connect to the cloud by pressing "C" on the remote control or "NET" on the back of the device .)



After logging in to the cloud account and waiting for device online, you can control the device through the cloud platform.

Note: In cloud mode (indicator 2 is green), WIFI is not visible. Press the "A" key on the remote control or click the "NET" key on the back of the device to exit the cloud mode. The indicator light 2 is off in green, and the device WIFI is visible again.

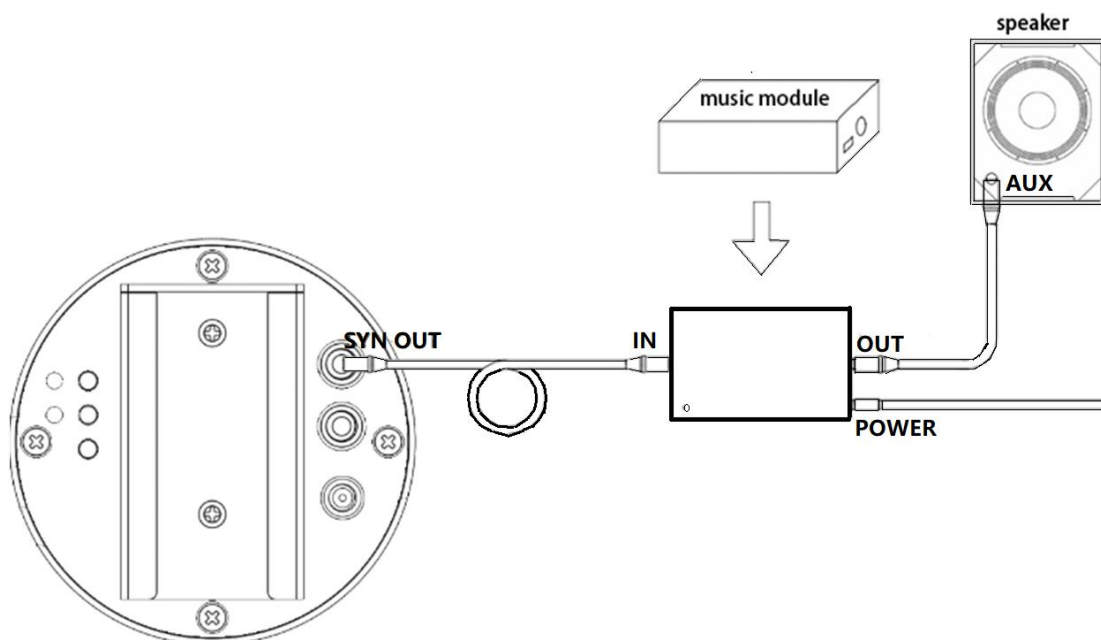
Audio output

(1) Play sound by connecting to Bluetooth

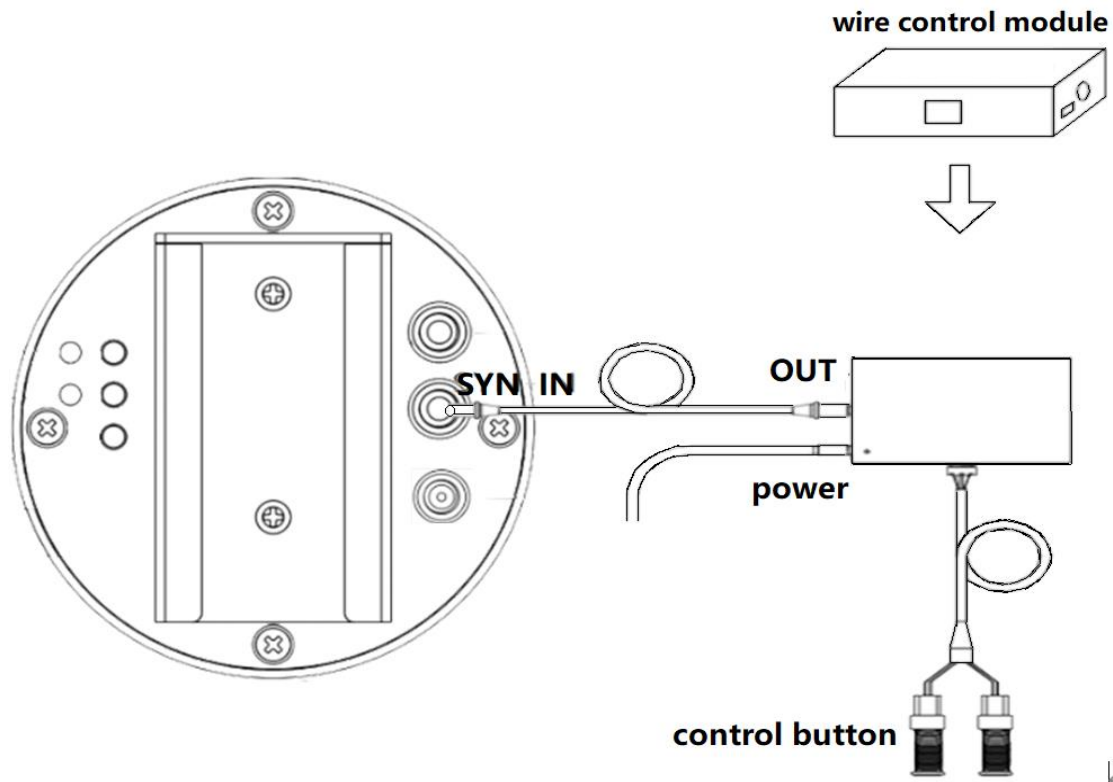
After connecting the device, open the APP: "Setup"->"Toggle Bluetooth". After Bluetooth is turned on the device will automatically scan the surrounding Bluetooth. Select the Bluetooth to be connected from the scanned Bluetooth list, and click" Confirm". After successful connection, sound can be output through Bluetooth.

(2) Play the sound through the music module

Connect the music module device and audio device as follows to output sound through the audio



Wired control



Connect the wire control box with the device as shown above (the wire control output is connected to the SYN-IN of the device), and the device can be opened/closed or video switching by the wire control button

Advanced Function

1. Switch device WIFI

Long press “NET” key on the back of the device for 3 seconds or click “WIFI” key on the remote control to turn off WIFI of the device. Device indicator light 2 will be light blue.

When WIFI is off, long press the “NET” key at the back of the device for 3 seconds or click the “WIFI” key on the remote control to turn on WIFI, and the light blue indicator light 2 will be off.

2.Reboot system

Click “Reset” to restart the device system under the condition of constant power.

3.Restore factory setting

Long press the “NET” key for more than 10s until the indicator light 1 have all colors flash and eventually turns red, indicating that the factory setting has been restored.

Note: Restoring the factory settings will also clear the user's uploaded video

Troubleshooting

1. After turning on the power, the LED on the fan blade does not light up or the indicator light on the back does not light up

Solution: Check whether the power supply is well connected and whether the circuit is normal.

2. The indicator light 1 on the back is yellow-green (when a single unit is displayed)

Solution: It has entered the slave mode, long press the MODE button for 3 seconds on the back to

restore the master mode.

3. The back indicator light 1 flashes in purple (when the network is displayed)

Solution: Long press the MODE button to return to the master mode, or long press the MATCH button to return to the slave mode.

4 .The rotating display has a single color circle.

Solution: Some LEDs may be damaged, please contact the supplier for repair.

5. Unable to start rotation

Solution: Power on again after power off, please contact the supplier if fail to solve it.

Indicator status

Device status	Indicator color
Standby	LED1 Red (host); LED1 Yellow-green (slave)
Running	LED1 Blue (host); LED1 Light blue (slave)
Connect to the cloud	LED2 Green
WIFI is off	LED2 Light blue
Routing mode	LED1 Red flashing(host); LED1 green flashing (slave)
Matching remote control	LED1 Green flashing (host)
Networking failure	LED1 Purple flashing(host)
Restoring factory settings	LED1 All colors are flashing

Product specifications

Product model	G50
Resolution	832*832
Device area	50*50*7.5cm
Number of lamp beads	832 PCS
Content upload	APP、PC、Cloud upload
Wired control	Support wired control
Online upgrade	Support online upgrade
Music connection	Support wired connection, Bluetooth connection
Holo Wall	None
Human-Computer Interaction	None
Real-time screencast	None
Memory capacity	4G (Built-in memory)
Rated power	45W
Service life	More than 30000 hours
warranty period	One year