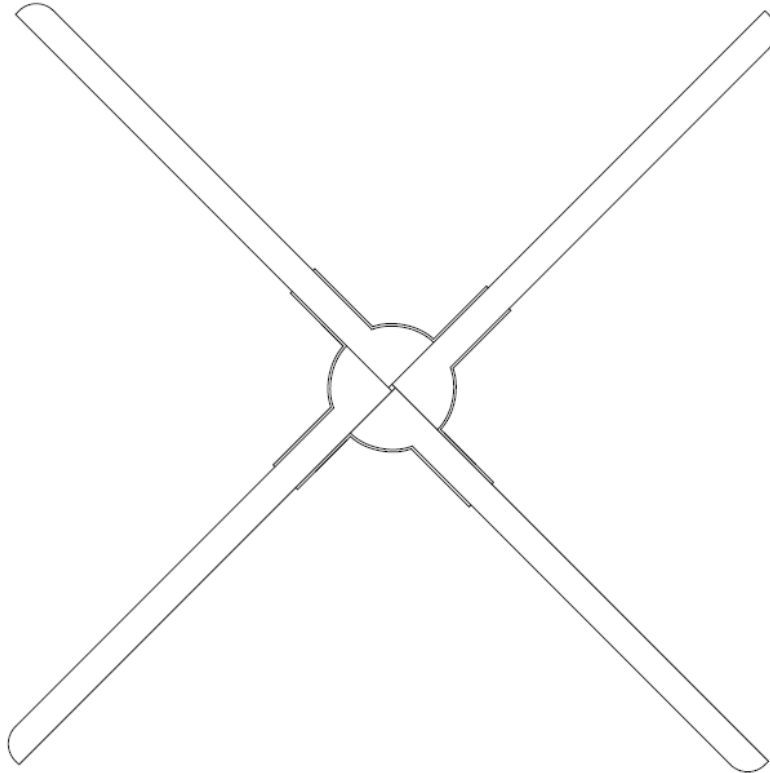


# 3D HOLOGRAPHIC



## User Manual

Warning: Please read the manual carefully before using the product.

# Content

<b>Notes.....</b>	<b>1</b>
<b>Parts list .....</b>	<b>1</b>
<b>Interface Description.....</b>	<b>2</b>
<b>Remote Controller.....</b>	<b>3</b>
<b>How to Install .....</b>	<b>4</b>
<b>Instructions for use .....</b>	<b>5</b>
1、 Connect the power supply .....	5
2、 Remote control .....	5
3、 Mobile APP Control .....	6
4、 Control with cloud.....	6
5、 Audio output.....	7
6、 Wired control .....	8
7、 Switch fan WIFI .....	8
8、 Reboot system.....	8
9、 Restore factory setting.....	9
10、 Real-time screencast .....	9
<b>Holo wall operation .....</b>	<b>9</b>
1、 Holo wall installation.....	9
2、 Upload video on Holo wall .....	10
3、 Holo wall control .....	10
<b>Troubleshooting.....</b>	<b>11</b>
<b>Indicator status.....</b>	<b>11</b>
<b>Product specifications .....</b>	<b>12</b>

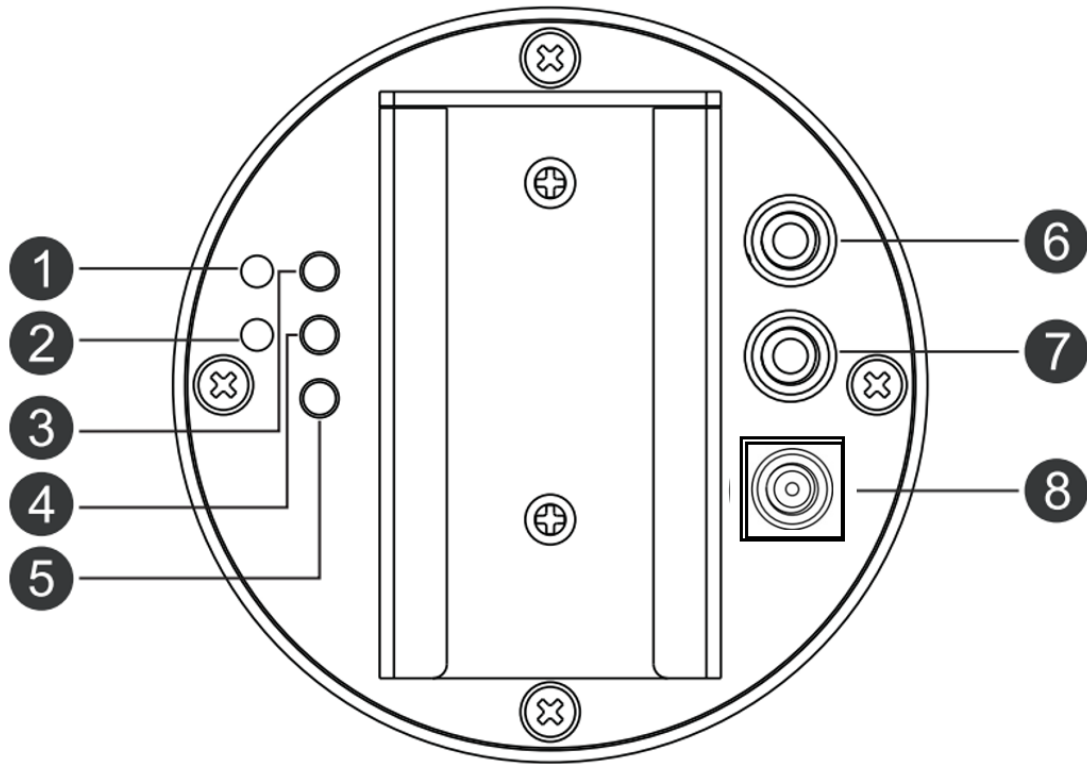
## Notes

- 1、 The Fan shall be installed away from obstacles. Installed first and then powered on to avoid damage to the blades
- 2、 Keep distance when the fan is working. Keep safety when install it high above the ground.
- 3、 When the fan is working, do not disassemble the fan, otherwise it may cause abnormal operation on the fan.
- 4、 Keep away from high temperature and high humidity environment. Do not use it outdoor if it is raining.
- 5、 Pay attention to maintenance and clean the fan regularly.

## Parts list

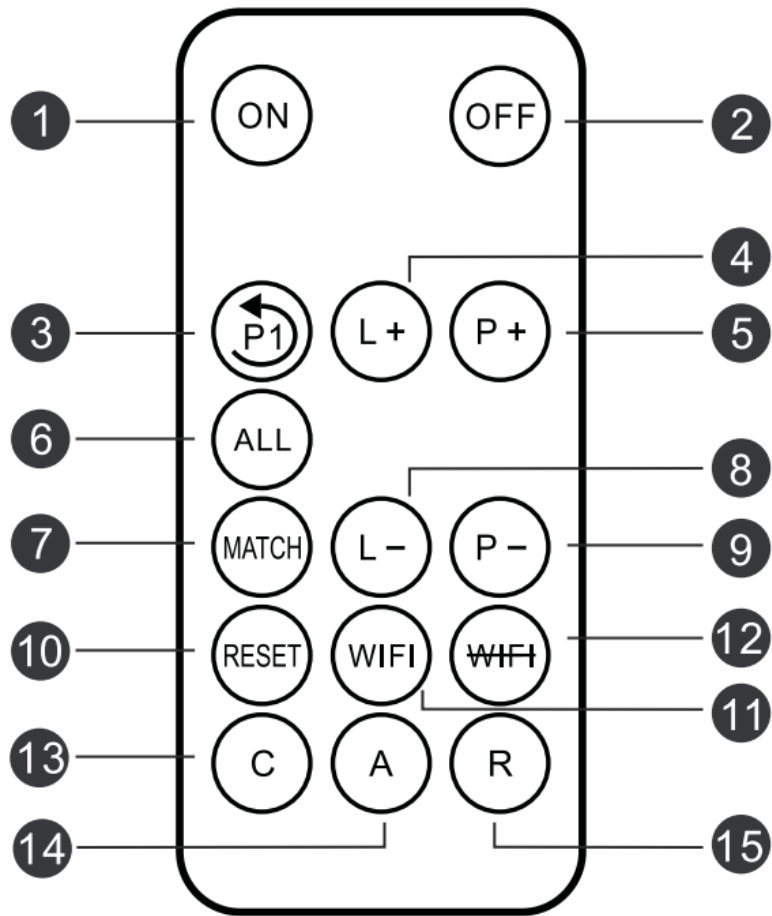
No.	Items	Quantity
1	3D Hologram Fan	1
2	Fan blade	4(A×2,B×2)
3	Adaptor	1
4	Remote Controller	1
5	Wall-mounting Part	1
6	Setscrew	2
7	Warranty Card	1
8	Certification Card	1
9	specification	1

# Interface Description



- ① **Indicator light1**: Indicates status and operation of power, mode.
- ② **Indicator light2**: Indicates cloud connection, Wi-Fi status and other operations.
- ③ **Mode key**: Switch mode.
- ④ **Match key**: Match remote controller.
- ⑤ **NET**: Switch of WIFI on/off and Cloud.
- ⑥ **SYN OUT**: Output synchronizing signal.
- ⑦ **SYN IN**: Input synchronizing signal.
- ⑧ **Power connector**: Connect with Adaptor to supply power for the fan.

# Remote Controller



①**ON**: Start fan

②**OFF**: Stop fan

③**P1**: Play the first video

④**L+**: Increase brightness

⑤**P+**: Switch to the next video

⑥**ALL**: Match all masters to remote

⑦**MATCH**: Match remote controller

⑧**L-**: Decrease brightness

⑨**P-**: Switch to the previous video

⑩**RESET**: Restart the system

⑪**WIFI**: Turn on the WIFI

⑫~~WIFI~~: Turn off the WIFI

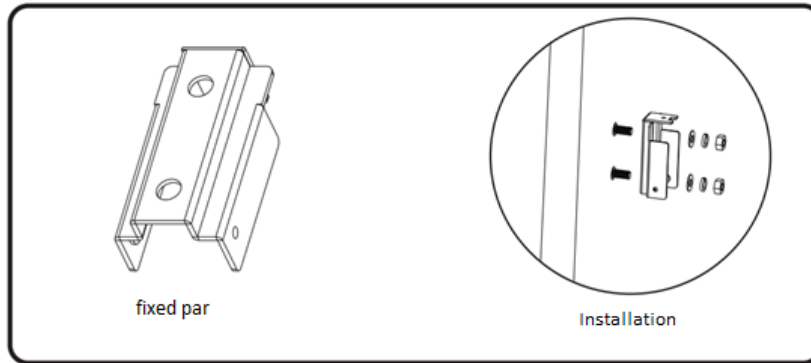
⑬**C**: Switch to Cloud

⑭**A**: Switch to APP mode, disconnect to Cloud or Routing mode

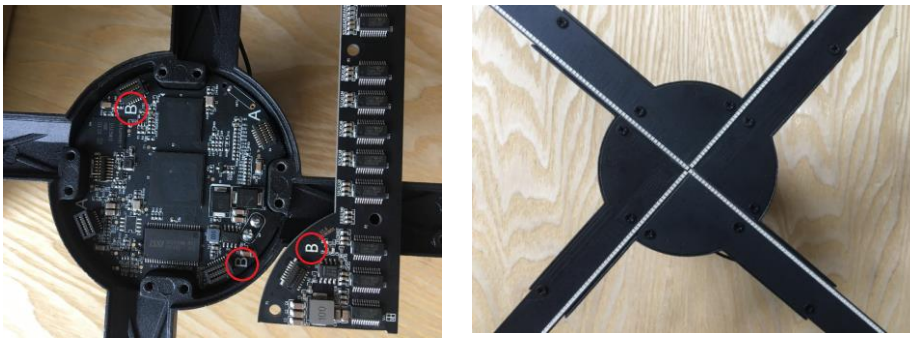
⑮**R**: Switch to Routing mode

# How to Install

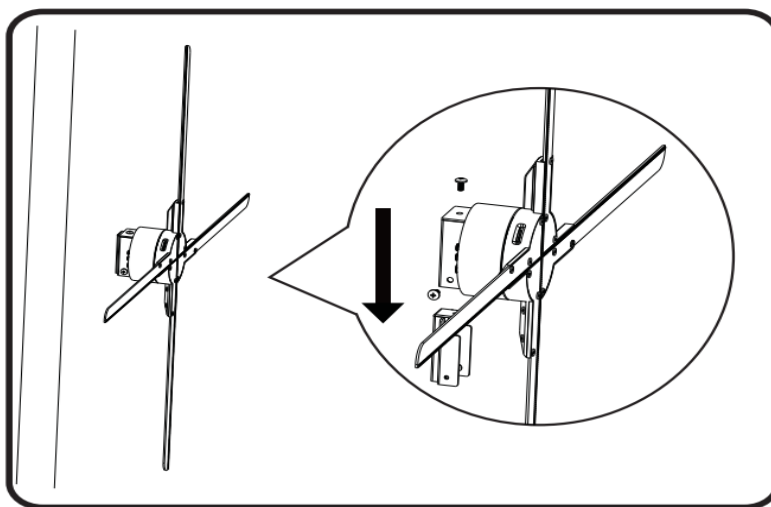
- 1、 Fix the fixed part to the wall with expansion screws or ordinary screws.



- 2、 Take out the fan body and fan blades. Place blade A in position A and blade B in position B, and then tighten the screws



- 3、 Put the fan into fixed part, lock the screws to finish install. As below picture:



# Instructions for use

## 1、Connect the power supply

After the fan is fixed, the power adapter is used to connect the power socket of the fan. And the fan will be in standby state. The LED on the fan blade lights up white and goes out, continuously circulating. The indicator light 1 behind the fan is always red. If the indicator light 1 is off and the LED of the fan blade is not on, please check the power supply. If the LED of the fan blade is on but the indicator light 1 is green, it means that the fan is in slave MODE. Hold down the Mode key for 5s to switch to the host.

## 2、Remote control

### (1) Remote match

When the fan is in standby state (no rotation), click the “MATCH” button behind the fan, and indicator 1 will turn from red to green flashing. At this time, use the remote control to aim at the fan, click the MATCH key of the remote control, indicator 1 will turn back to red after the green flashing becomes faster, and the pairing is successful.

### (2) Turn on or off

Use the remote control to aim at the fan, press “ON” on the remote control, the indicator light 1 ON the back of the fan changes from red to blue, and the fan start to run. Use the remote control to aim at the fan, press “OFF” on the remote control, the indicator light 1 on the back of the fan changes from blue to red, and the fan stops to run.

### (3) Switch video content

Use the remote control to aim at the fan, press “P+” on the remote control to switch to the next video, press “P-” to switch to the previous video, and press “P1” to switch to the first video.

### (4) Adjust brightness

Use the remote control to aim at the fan, press the “L+” on the remote the brightness of fan will increase, press the “L-“ to reduce the brightness.

For more information on other key functions of the remote control, please refer to the description of the remote control.

### 3、 Mobile APP Control

#### (1) Download APP software

Android Download URL:

<http://down.holocloud.online>

IPhone (App Store) search for :3D Magic

It can be downloaded APP by scanning the QR code



#### (2) Connect with device

Connect to the WIFI of the device, and open the APP.

The WIFI format of the device will be as follows:

CS\_XXX\_XXXXXX. The specific number is shown in the body of the device, the password is CS123456



*Note: If the APP cannot be connected, check whether the APP is the latest version. At the same time, APP needs the necessary permissions such as opening location and storage*

#### (3) Switching fan(On or OFF)

Click the switch button on the APP to turn on/off the fan.

#### (4) Upload video content

Click “Upload” to upload videos or photos to the fan.

#### (5) Switch video content

Click a video in the video list, it will automatically switch to play the corresponding video

#### (6) Edit Video

Click “Edit” to edit the video, including: delete, rename, drag to sort, etc.

#### (7) More settings

Click the "Setup" below to adjust the brightness, angle, play mode and so on.

### 4、 Control with cloud

The cloud can remotely control the fan, the operation steps are as follows:

#### (1) Cloud account registration

Click the corresponding website and follow up the prompts on the page to complete the account registration. You can choose China server or European server.

China server URL: <https://www.holocloud.online/>

European server URL: <https://england.holocloud.online/>

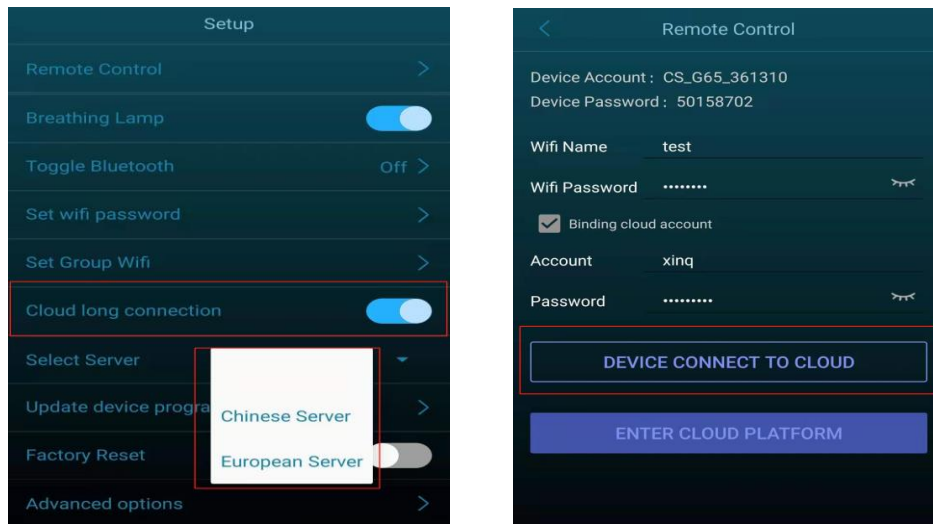
#### (2) Configure the cloud connection information via the mobile phone APP

Connect the mobile APP to the fan, and enter: “Setup”. Select the cloud server you want to use, setting the “Cloud long connection” on. And then click “Remote Control”,



Enter the network used to connect to the cloud and the bound cloud account. Click "DEVICE CONNECT TO CLOUD", and the fan will automatically connect to the cloud, Fan indicator light 2 will turn green, APP will be disconnected from the fan and the WiFi of the fan will not be visible

(If the Fan has connected to the cloud succeed, next time you can quickly connect to the cloud by pressing "C" on the remote control or "NET" on the back of the fan.)



### (3) Cloud operation

After logging in to the cloud account and waiting for fan online, you can control the fan through the cloud platform.

### (4) Exit Cloud Control

When the fan enters cloud system (indicator light 2 turns green), press "A" key on the remote control or click "NET" key on the back of the fan to exit cloud system. The green light of indicator light 2 will be off, and the WiFi of the fan will be visible again.

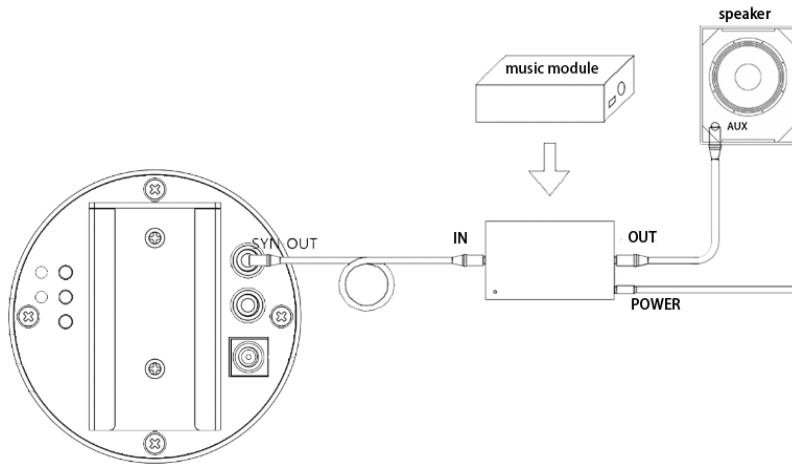
## 5、Audio output

### (1) Play sound by connecting to Bluetooth

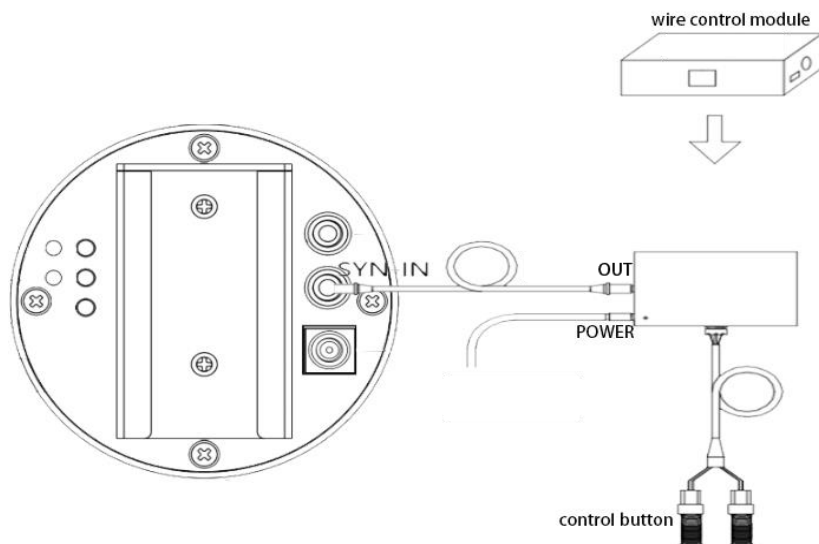
After connecting the fan, open the APP: "Setup"->"Toggle Bluetooth". After Bluetooth is turned on the fan will automatically scan the surrounding Bluetooth. Select the Bluetooth to be connected from the scanned Bluetooth list, and click "Confirm". After successful connection, sound can be output through Bluetooth.

### (2) Play the sound through the music module

Connect the music module fan and audio fan as follows to output sound through the audio



## 6、Wired control



Connect the wire control box with the fan as shown above (the wire control output is connected to the SYN-IN of the single fan or the host of holo wall screen), and the fan can be opened/closed or video switching by the wire control button (the specific function is determined by the wire control program).

## 7、Switch fan WIFI

Long press “NET” key on the back of the fan for 3 seconds or click “~~WIFI~~” key on the remote control to turn off WIFI of the fan. Fan indicator light 2 will be light blue. When WIFI is off, long press the “NET” key at the back of the fan for 3 seconds or click the “WIFI” key on the remote control to turn on WIFI, and the light blue indicator light 2 will be off.

## 8、Reboot system

Click “Reset” to restart the fan system under the condition of constant power.

## 9、Restore factory setting

If you forget the password of the fan, you can restore the factory setting of the fan. To restore the factory setting, it will clear the video uploaded by the user. Long press the “NET” key for more than 10s until the indicator light 1 have all colors flash, the host will return red light, and the slave will return yellow-green light, indicating that the factory setting has been restored.

## 10、Real-time screencast

Download the software of real-time screencast, can realize the real-time projection of video to the device synchronous display.

Software download URL: [http://down.holocloud.online/3D\\_TP.rar](http://down.holocloud.online/3D_TP.rar)

Support models: P80, P100

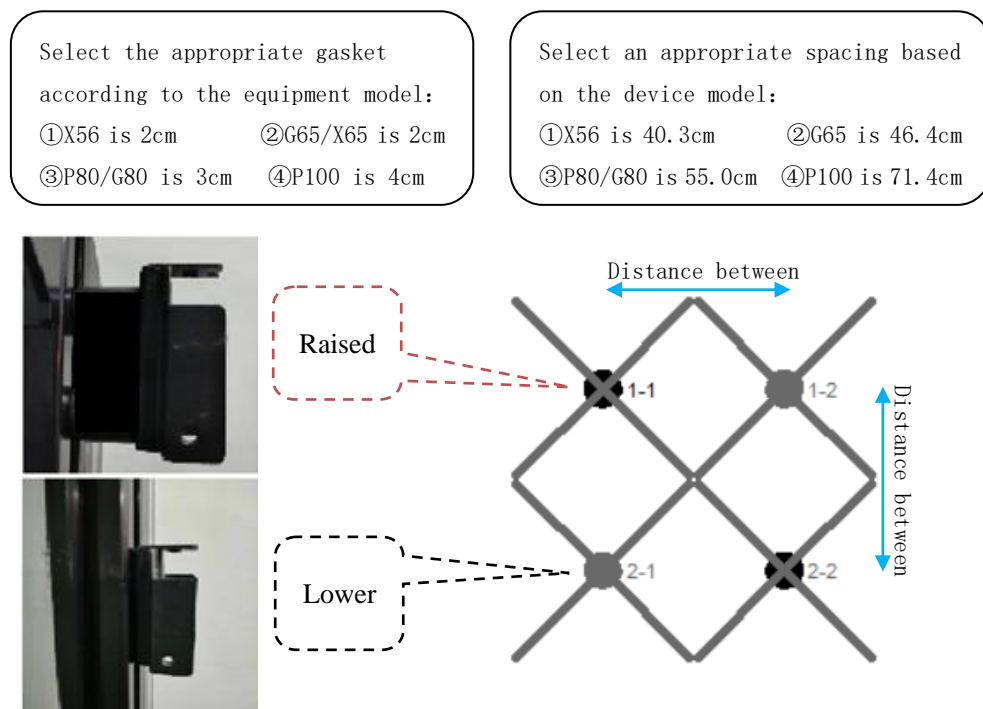
# Holo wall operation

## 1、Holo wall installation

Take 4 fans connected to the screen as an example.

(1) Fix the fixed part with the distance. The first one in the upper left corner shall be raised with a gasket, and the adjacent positions shall not be raised, and so on.

(2) SYN OUT of device 1-1 connects to SYN IN of device 1-2, SYN OUT of device 1-2 connects to SYN IN of device 2-2, SYN OUT of device 2-2 connects to SYN IN of device 2-1, and SYN OUT of device 2-1 connects to SYN IN of device 1-1. As shown below:



(3) Power on all fans, select one as the host of the holo wall. Long press the "MODE" button on the back of the host for 3 seconds, the fan indicator 1 will turn yellow-green, and then double-click the "MATCH" button. If the indicator 1 turns red, the networking mode is set successfully; if the indicator 1 turns purple and flashes, means Failed to set the networking mode. At this time, long press the "MATCH" button to return to the slave mode, check whether all the connections are correctly connected, and then double-click the "MATCH" networking operation until the indicator light 1 turns red.

## **2、 Upload video on Holo wall**

(1) Software download and installation ( Mobile download APP 3D Magic)

Download URL: <http://doc.holocloud.online/software/>

Download the cutting software from the above website and unzip it.

(2) Establish a connection with the holo wall fan and the software

a. Connect the router and the fan to the power supply, and wait for the initialization of router and fan to complete.

b. Double-click the "MODE" button on the master or press the "R" button on the remote control to connect to the router, the indicator 1 of the master will flash red, and the indicator 1 of the slave will flash green.

c. Connect the computer or mobile phone to the WIFI of the router: CS\_Box (password: CS888888)

d. Open the cutting software or mobile phone to cut and upload the video

e. Enter the cutting software "console" to adjust the angle of the holo wall fan, and perform operations such as video deletion and sorting.

The mobile APP can add, delete, modify and check videos on the video page, and Angle calibration can be performed on the setting page.

f. After the video upload is complete, double-click the host "MATCH" button to cancel the connection to the router

## **3、 Holo wall control**

(1) Click the "MATCH" button behind the host (or click the "ALL" button on the remote control to enter this state), the indicator light 1 changes from red to green flashing, at this time use the remote control to aim at the host, click on the remote control's "MATCH" button, indicator 1 flashes faster and then returns to red, then the pairing is successful. After the pairing is successful, the entire holo wall fans can be controlled through the remote control.

(2) Turn on the wireless function of the mobile phone, connect to the host WIFI, and turn on the mobile APP, it will automatically connect to the fan. After the connection is successful, the holo wall can be controlled through the APP.

(3) After entering the routing mode, the holo wall can also be operated and controlled through the cutting software console.

The mobile APP can also control the joint screen under the condition of establishing the joint screen model.

- (3) It is also possible to connect all fans to the cloud system, and the cloud establishes a “model” of the holo wall corresponding to the holo wall, so as to control the holo wall through the cloud.

## Troubleshooting

1. After turning on the power, the LED on the fan blade does not light up or the indicator light on the back does not light up

Solution: Check whether the power supply is well connected and whether the circuit is normal.

2. The indicator light 1 on the back is yellow-green (when a single unit is displayed)

Solution: It has entered the slave mode, long press the MODE button for 3 seconds on the back to restore the master mode.

3. The back indicator light 1 flashes in purple (when the network is displayed)

Solution: Long press the MODE button to return to the master mode, or long press the MATCH button to return to the slave mode.

4. The indicator light 1 on the back shows white light

Solution: Power on again after power off.

5. The rotating display has a single color circle.

Solution: Some LEDs may be damaged, please contact the supplier for repair.

6. Unable to start rotation

Solution: Power on again after power off, please contact the supplier if fail to solve it.

## Indicator status

Device status	Indicator color
Standby	LED1 Red (host); LED1 Yellow-green (slave)
Running	LED1 Blue (host); LED1 Light blue (slave)
Connect to the cloud	LED2 Green
WIFI is off	LED2 Light blue
Routing mode	LED1 Red flashing(host); LED1 green flashing (slave)
Matching remote control	LED1 Green flashing (host)
Networking failure	LED1 Purple flashing
Malfunctioning	LED1 White or LED2 green flashing
Restoring factory settings	LED1 All colors are flashing

# Product specifications

Product model	X50	X56	G65	G80/P80	P100
Resolution	512*512	640*640	720*720	1280*1280	1600*1600
Device area	47*47*7.5cm	56*56*7.5cm	65*65*7.5cm	77*77*7.5cm	100*100*8.7cm
Number of lamp beads	512 PCS	640 PCS	720 PCS	1280 PCS	1600 PCS
Content upload	APP、PC、Cloud upload				
Wired control	Support				
Online upgrade	Support				
Music connection	Support wired connection, Bluetooth connection				
Holo Wall	No Support	Support			
Human-Computer Interaction	No Support			Support(P80/P100)	
Real-time screencast	No Support			Support(P80/P100)	
Memory capacity	4G(Built-in memory)			8G(Built-in memory)	
Rated power	45W		48W		60W
Maximum power	60W		100W		140W
Service life	More than 30000 hours				
warranty period	One year				